

MinuteMan BrainOS 3.2 Release Notes

This document contains information confidential and proprietary to Brain Corporation. It may not be transmitted, modified, duplicated, disclosed, or distributed without prior written permission of Brain Corporation. This document may only be viewed by third parties under an active non-disclosure agreement (NDA) with Brain Corporation covering the scope of the information herein. If you received or obtained this document outside of these requirements, please destroy all copies and report this error to legal@braincorp.com.

©2021 Brain Corporation. All rights reserved.

Brain Corporation

Corporate Headquarters
10182 Telesis Court Suite
San Diego, CA 92121 USA

OEM Technical Services
+1-619-738-4675, 5 am – 5 pm PST
oem.support@braincorp.com

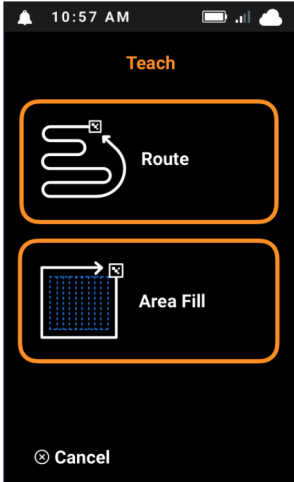
BrainOS Release 3.2

This document lists the new features, improvements, bug fixes, and known issues for the Brain Corporation BrainOS version 3.2 software release. After the new release downloads to each machine, this version will automatically be available after the next power cycle.

These Release Notes are intended for Brain and OEM use only. Customers and end users should refer to the Release Highlights document.

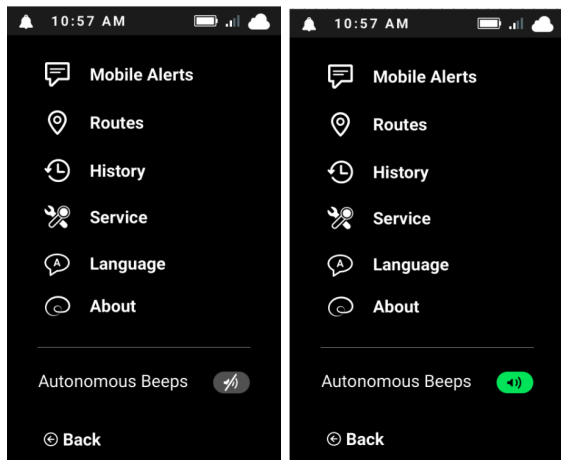
NOTE: This document may also include notes from the BrainOS 3.2 patch releases. These patch items will be tagged with their relative patch release number.

Scrubber App Features

Description
<p>Area Fill is now available for customer use in non-retail environments. The feature is off by default. Contact oem.support@braincorp.com to enable the feature.</p> 
<p>Route Label Keyboard for Alphanumeric languages. In replacement of pre-set labels, operators will now be able to type in their own route label. There is a 15 character limit. Japanese & Korean will still have pre-set labels.</p>

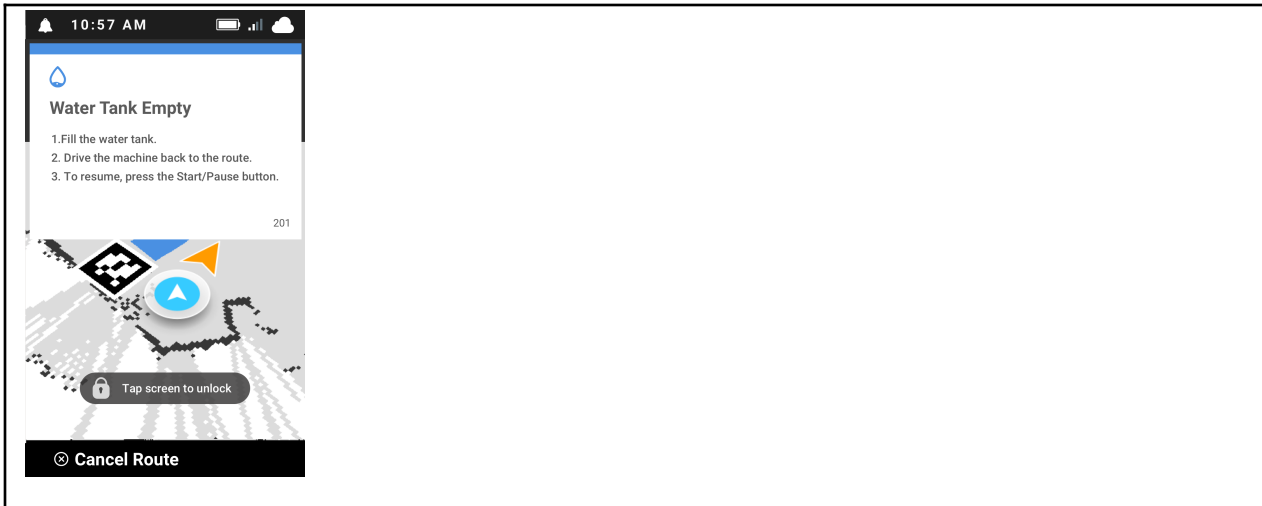


UI Controlled Beeping. Available within the settings menu, operators will be able to enable the machine to beep every 5 seconds in autonomy.



Joyride Mitigation - End of Route. At the end of a route or series of consecutive routes, the machine will enter a manual lockout mode. To re-enable manual operation, the operator must enter the '1337' Security PIN.

Tap Screen to Unlock. Improvements to lock screen behavior so actionable information can be shown without requiring the operator to enter the Security PIN.



Added Norwegian language support on the UI.

Added Finnish language support on the UI.

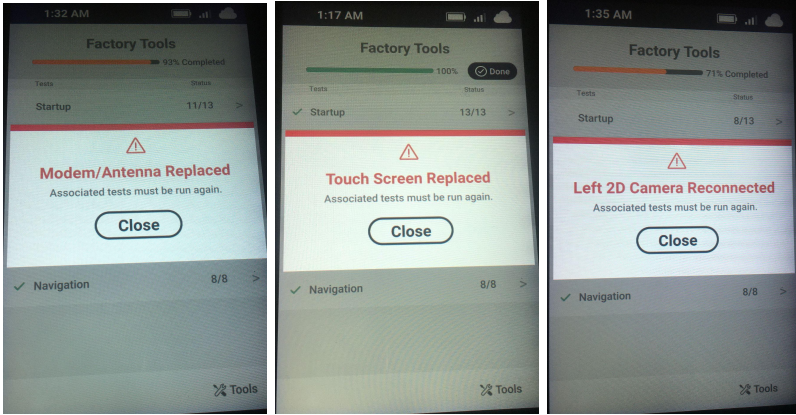
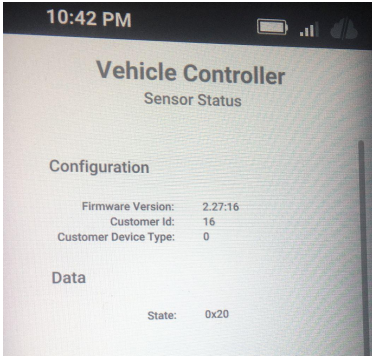
Scrubber App Improvements

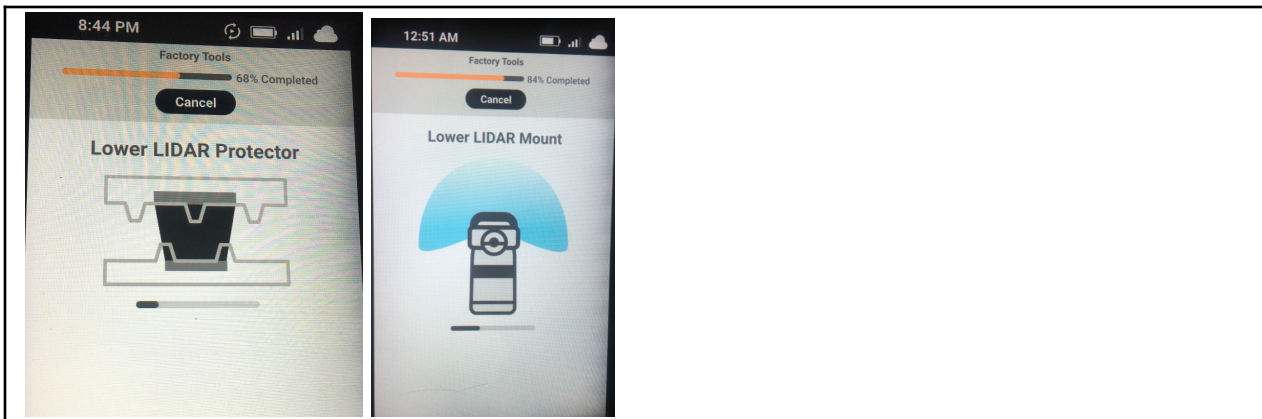
Description
<p>Split “System Errors” to be reported into 2 sub-categories: Vehicle Controller Errors & Firmware E-Stop Errors.</p> <div style="display: flex; justify-content: space-around;"> <div style="border: 1px solid black; padding: 5px; width: 45%;"> </div> <div style="border: 1px solid black; padding: 5px; width: 45%;"> </div> </div>
<p>Added costmap replay support for E-Stops in The Portal.</p>
<p>Added support for 105Ah 8S1P System Lithium batteries.</p>

Scrubber App Bug Fixes

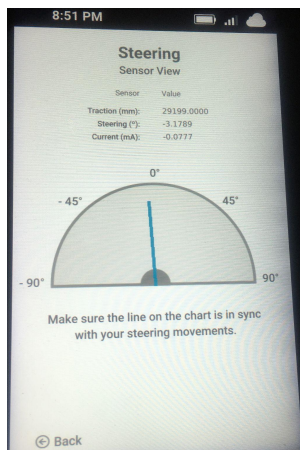
Description
Fixed a Dutch translation error.
Fixed a bug where the blue Start/Pause button would continue to blink after canceling a route.

Diagnostic App Improvements

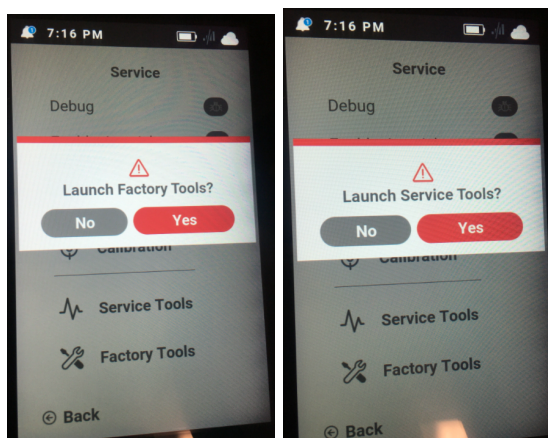
Description
<p><i>Sensor Replacements:</i> Added support for USB type sensor replacement information when the touchscreen, modem, and 2D camera are disconnected/reconnected or replaced. Note: 2D cameras will not display as replaced just as disconnected/reconnected/.</p>

<p><i>Firmware update:</i> Added the text “Do not drive the machine or turn off the machine until the update is complete.”</p>
<p><i>Vehicle Controller Sensor Status:</i> Added Customer ID and Customer Device Type fields for machine. Added Data field where the Vehicle Controller State is displayed. Removed Vehicle Controller Sensor View and combined information with Sensor Status.</p>

<p><i>Factory Tools Lower Lidar Protector & Lower Lidar Mount:</i> Added picture of lower lidar protector and the lower lidar view while the tests run.</p>



Steering Sensor View: Moved steering view up to middle of tool. Added Current value in mA. Removed Green Arrow representing offset.



App switch Warning: Removed the text "You will exit BrainOS."



Traction Encoder Sensor view: Remove requested and actual throttle

Sensor replacements: Updated pop-up to say “Replaced” instead of “Reconnected” when the sensor that is connected is different than before. Note: this is for the lidars and 3D cameras only.

About: Remove “Autonomy Kit” field.

Diagnostic App Bug Fixes

Description
<i>Vehicle Controller Sensor Status:</i> Customer Device Type in Vehicle
Fixed cases where the machine would boot up with the wrong machine type label.
<i>Error Pop up:</i> Added “No Error Details Available” in the Details tab and “No HW Faults Available” in the HW faults tab instead of a blank screen